

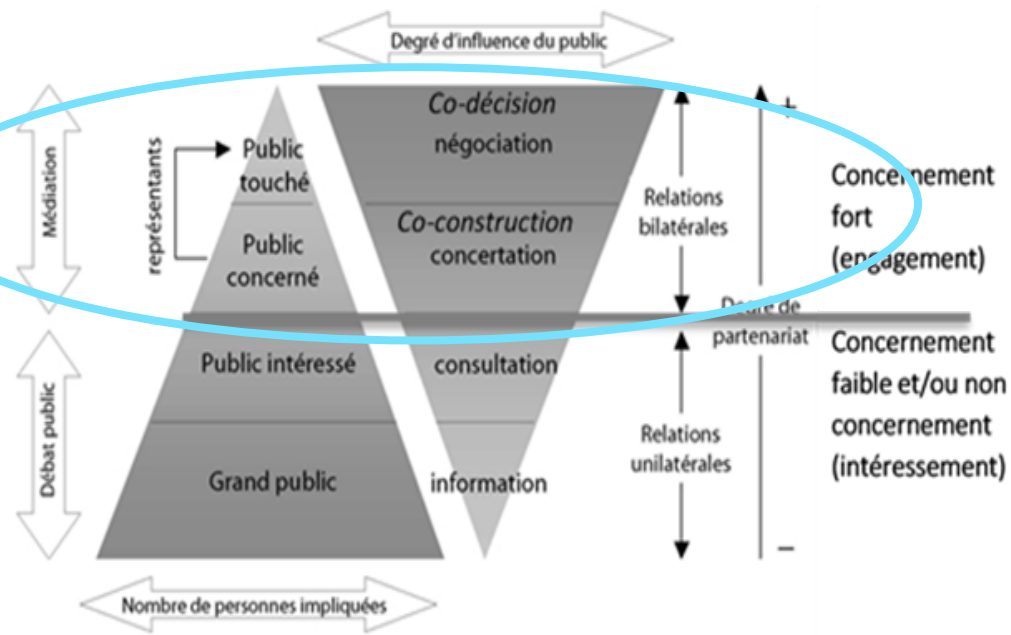


AATRE

An agora for the co-construction
of land resilience with Occitania's citizens.



Research context: a lack of co-construction with citizens in land-use planning



Source : Mettan's pyramid (1992)

Public participation merely takes the form of information or consultation, but co-construction with citizens is extremely rare in decision-making processes (Mabi, 2014a ; Delaire, 2002)

VS.

Citizens are more and more attentive to be involved into the public decision-making process, especially on environmental and social issues. (Laurent, 2013)

Growing social demand with new forms of "environmental democracy" (Sauvé, 2010)

The use of digital technology could make public participation more effective and more inclusive (Guihéneuf, 2017, Monnoyer Smith, 2011)

Project genesis: an experimental digital platform of public participation “e-Debat”



A research pilot project applied to Mediterranean offshore wind farm (Gruissan) in 2017

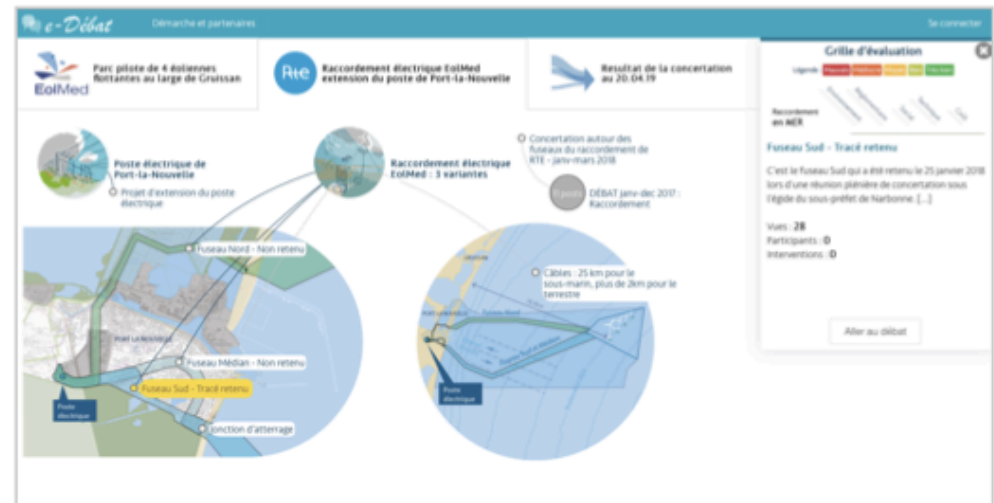
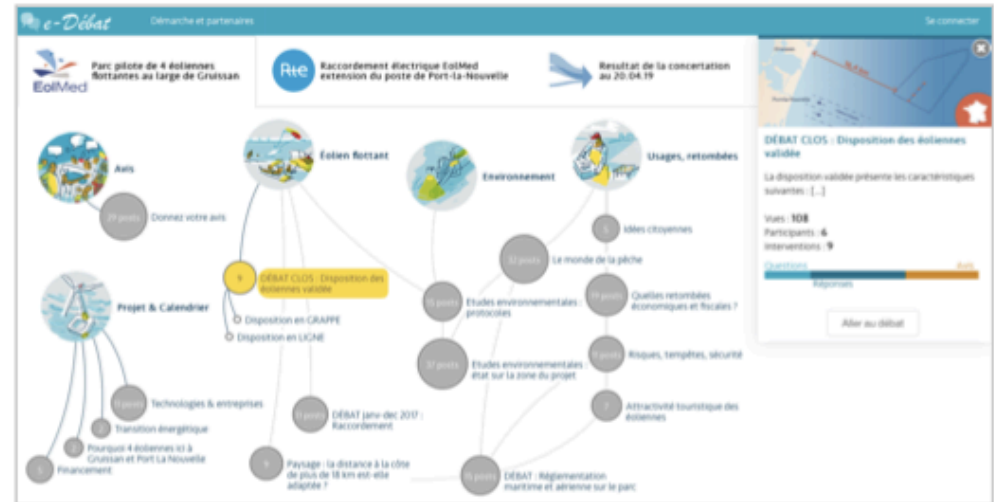


Collaborative design for an experimental digital consultation platform : *e-Debat*

Innovative hybrid platform



A “classic” face-to-face dialogue with citizens during the preliminary design phase



An opportunity to analyse the conditions of digital participation.

- **Digital:** this experimentation helped to identify some of the contributions resulting from digital technology in terms of information, transparency and traceability
- **Environment:** some of citizens' proposals were taken into account in the construction of the project, especially on environmental issues
- **Risk :** these results relied on the cooperation of the company and an implementation of the platform at the early stage of the project
- **Innovation :** complementarity between face-to-face and digital debate mechanisms (*hybridization*)

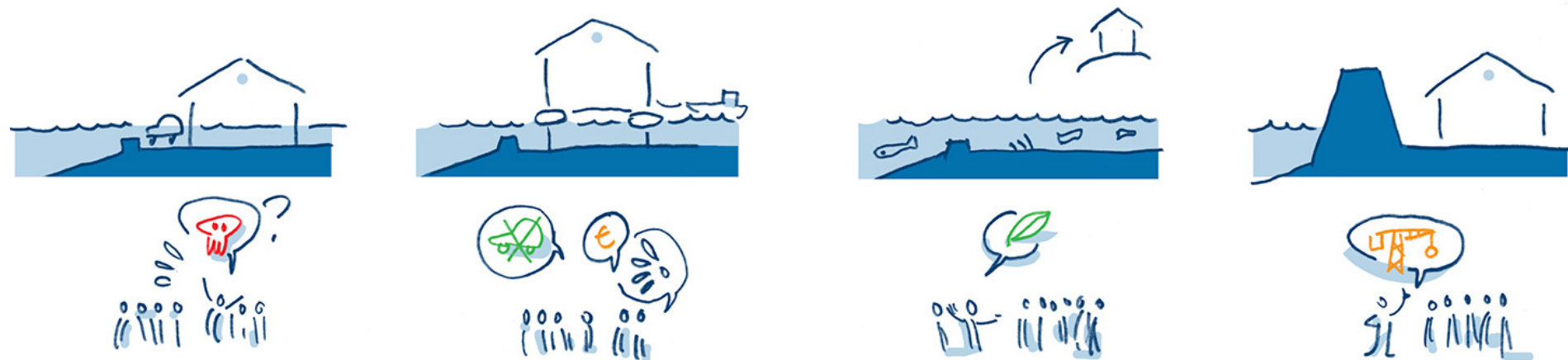
The quality of the consultation relies on the integration of the citizens proposals, which is easier when the participation mechanism takes place at a very early stage of the project.

The AATRE project : citizen participation and ecological resilience of costal territories.

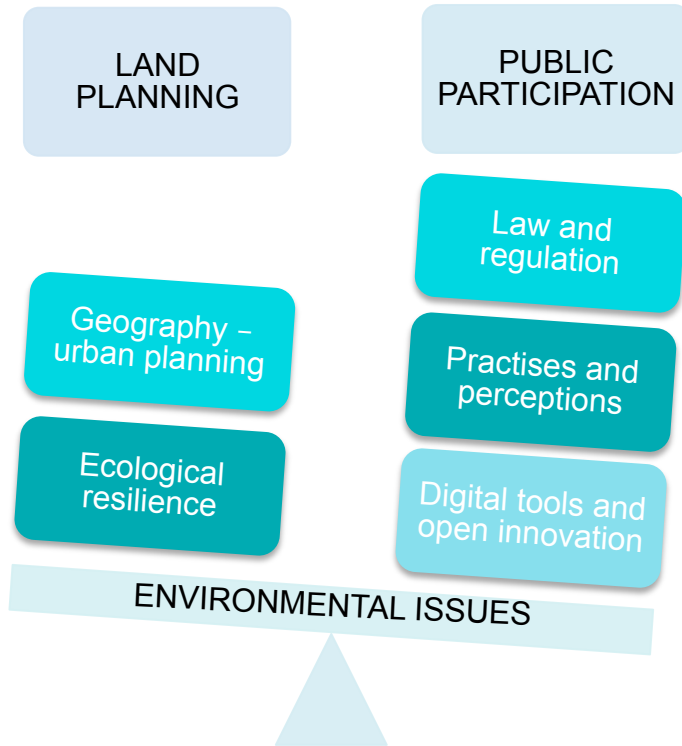
Objective: to improve the public participation system (co-design), especially in the planning and management of coastal territories

R&D around two main areas of research and applications:

- **Assistance and expertise to planners** in order to help them develop innovative tools and hybrid participation mechanisms during their project development;
- **Creation of a" living-lab"**, as an open space for managed discussions and debate on issues relating to planning and environmental matters, including decision-makers, politics, scientists and citizens.



An interdisciplinary project: across several research fields.



Field of spatial planning, with a disciplinary paradigm of ecological transition and territorial resilience
(Clark, 2007, LaGro, 2001; Webler, Tuler, Kruger, 2001)

The different levels of citizen involvement from non-participation or symbolic cooperation to effective power
(Arstein, 1969; Mermet & Salles, 2015)

For more effective and more inclusive public participation mechanisms (Guihéneuf, 2017 ; Mabi, 2013 ; Monnoyer Smith, 2011-a et b; Barbier et Larrue 2011) including the use of digital technology (Pioch, Rey Valette, Hardy, 2021).

Cognitive psychology

Geography – Land planning

Linguistics



A project team composed of researchers and practitioners

Direction



Sylvain PIOCH

Professor and Researcher
Geography & land planning

Coordination team

Norélia VOISEUX

Research engineer
Geography & management



Maëlle BANTON

Research assistant
Geography & audiovisuel media

Support team



Research questions and hypothesis

Main research question :

How “participation mechanisms” could allow citizens to be more engaged in territorial projects, especially those dealing with coastal and marine issues around environmental impacts ?

Three research hypothesis :

H1 : When citizens are involved in the first stages of a project, environmental issues may receive better consideration from “classical” decision maker => lower environmental negative impact

H2 : Conventional and digital tools of participation have different and complementary effects => applicants and decision maker are more aware about citizens main consideration BEFORE projects constructions.

H3: A dedicated place for participation in coastal development projects may facilitate a constructive and inclusive debate about planning and ecological transition => planning democracy

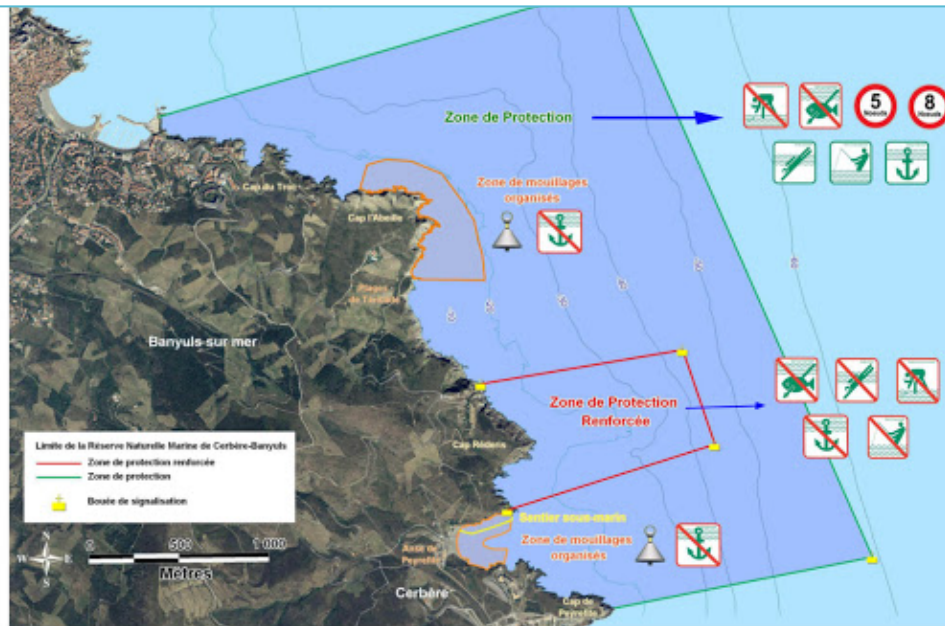
Methodology: an action-research embedded in local planning projects

An immersive and experimental position on the ground

- a long-term presence on the ground (3 years)
- interactions with regional and local actors for 10 years
- the choice of different fields of study (marine, coastal, private/public applicants, planning/construction)
- an exploratory and experimental hybrid digital/face to face approach
- qualitative (perceptions and practices) and quantitative (environmental impacts) methods and approaches to be assessed and linked (if possible)
- a multi-stakeholder panel : elected officials, private/public developers, institutionals and administrations, citizens, students, academics, etc.
- data produced by the interactions between citizens and decision-makers

3 experimental contexts: different planning projects located in coastal areas

1- *e-Debat Banyuls* : Marine Protected Area extension project of Banyuls-Cerbère MPA in the Eastern Pyrenees (inter-city level)



3 - *e-Debat Marseillan* : Planning coastal erosion effect and marine submersion rethink and redesign the coastline in Marseillan (city level)



2 - *e-Debat Qair* : Construction of Hydrogen facility (green plant) to be build in the harbour of Port-la-Nouvelle (regional level)



Hybrid forms: innovative approach for more inclusive and more efficient public participation

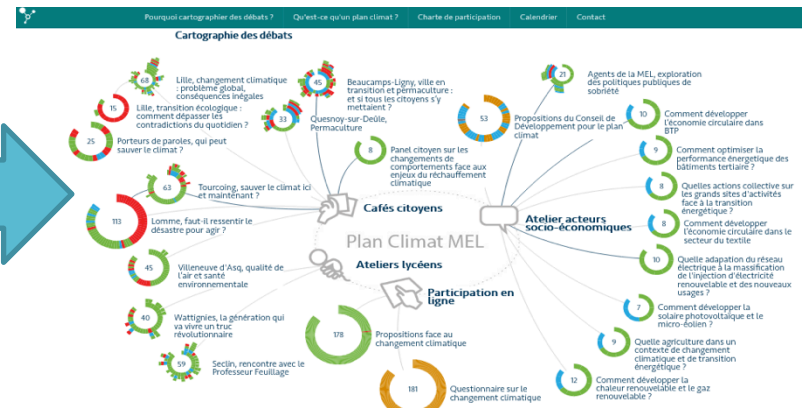
To develop hybrid forms of participation, blending digital technologies and face-to-face arrangements.

Citizens' workshops face-to-face

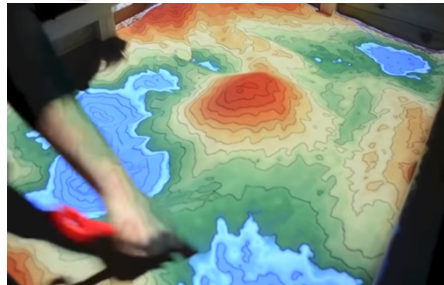


Hybridization

Digital concertation platform (e-Debat)



Mental flexibility exercises

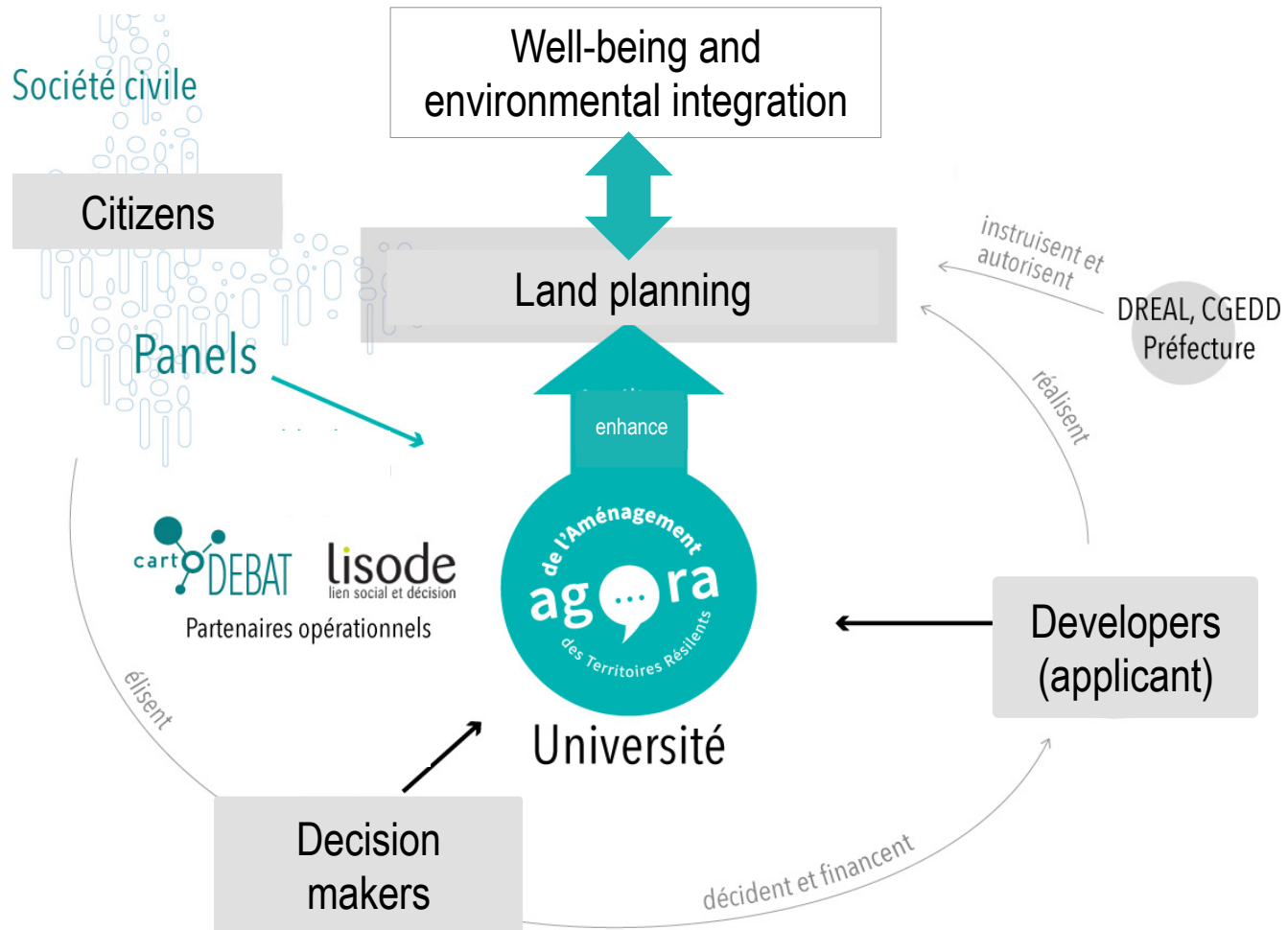


Participatory mapping and augmented reality



Forum theater, short movies...

The Agora Living lab': a citizens/planners interface to enhance integrated approach of land-use planning.



Thanks for your attention
and more here: <http://aatre.fr/>



norelia.voiseux@univ-montp3.fr

